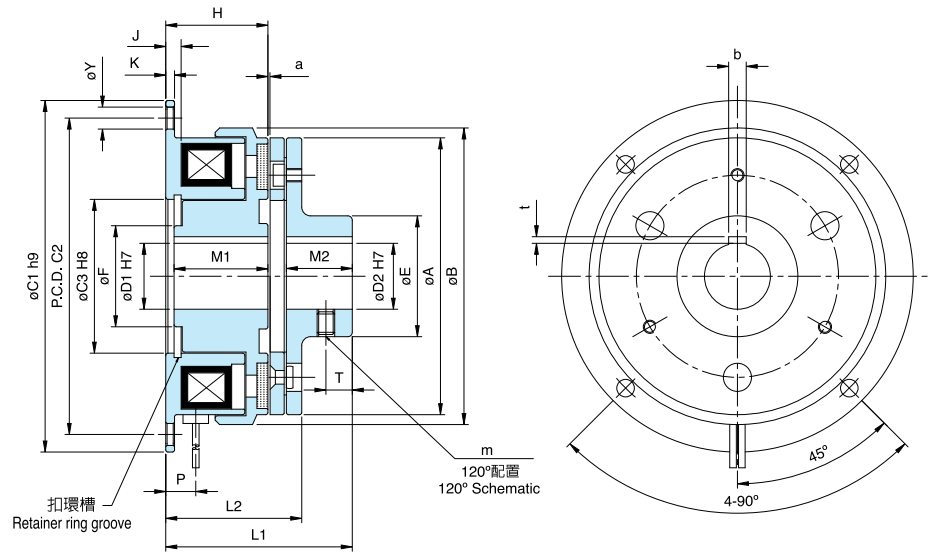


# CF1 Series

乾式單板電磁離合器-突圓固定型 Dry Single-plate Magnetic Clutch, Fixed-cylinder

附導座 with plating hub



型號 MODEL		CF10S6AA	CF11S5AA	CF12S5AA	CF1005AA	CF1010AA	CF1020AA	CF1040AA					
靜摩擦轉距 Static Friction Torque	[kgm](Nm)	0.55(5.5)	1.1(11)	2.2(22)	4.5(45)	9(90)	17.5(175)	35(350)					
動摩擦轉距 Dynamic Friction Torque	[kgm](Nm)	0.5(5.0)	1.0(10)	2.0(20)	4(40)	8(80)	16(160)	32(320)					
功率 Power	[24V](W) at 20°C	11	15	20	25	35	45	60					
徑 方 向 Radius	A	63	80	100	125	160	200	250					
	B	67.5	85	106	133	169	212.5	264					
	C1	80	100	125	150	190	230	290					
	C2	72	90	112	137	175	215	270					
	C3	35	42	52	62	80	100	125					
	D1	12   15	15   20	20   25	25   30	30   40	40   50	50   60					
	D2	12   15	15   20	20   25	25   30	30   40	40   50	50   60					
	E	27.5	31	41	49	65	83	105					
	F	23	28	40	45	62	77	100					
軸 方 向 Shaft	Y	5	6	7	7	9.5	9.5	11.5					
	H	24	26.5	30	33.5	37.5	44	51					
	J	3.5	4.3	5	5.5	6	7	8					
	K	2	2.5	3	3.5	4	5	6					
	L1	43.05	51.3	60.9	70.8	85	101.2	118.5					
	L2	31.55	35.3	40.9	46.8	54	65.2	75.47					
	M1	22	24.1	27	30	34	40.15	47.15					
	M2	15	20	25	30	38	45	54					
	P	7.5	9.5	8.9	9.5	9.5	10.5	15.5					
	T	6	8	10	12	14	18	22					
	m	2-M4	2-M5		2-M6		2-M8		2-M10				
	a	0.2 (±0.05)				0.3 ( <sup>+0.05</sup> / <sub>-0.1</sub> )				0.5 ( <sup>0</sup> / <sub>-0.2</sub> )			
	b	4   5	5   5	5   7	7   7	7   10	10   12	12   15					
t	1.8   2.3	2.3   2.3	2.3   3.3	3.3   3.3	3.3   3.8	3.8   3.8	3.8   5.3						
重量 Weight	(kg)	0.5	0.91	1.66	3.05	5.4	10.5	18.7					
保護素子 Protective band		470KD07	G80KD10		GD80KD14								